

Hook Lift Flat Beds

Wood or metal decking can be applied. Flat beds come equipped with 6 rack mounts on each side and 2 tool boxes on the front side.

Dimensions(mm)		Max. Load (T)			
Length	Width	12	16	18	24
6200	2550	12	16	18	24
6700	2550	12	16	18	24
7000	2550	12	16	18	24



Flat Beds With Profiled or Regular Sides

*Note: here are given just basic information and dimensions about the flat beds. For more options and cosumisations call: (+372) 33 95 841

Dimensions(mm)			Thickness Options(mm)		
Length	Width	Height	bottom/walls		
5600	2550	700	4/3	6/4	8/6
5600	2550	900	4/3	6/4	8/6
5600	2550	1100	4/3	6/4	8/6
5800	2550	700	4/3	6/4	8/6
5800	2550	900	4/3	6/4	8/6
5800	2550	1100	4/3	6/4	8/6
6000	2550	700	4/3	6/4	8/6
6000	2550	900	4/3	6/4	8/6
6000	2550	1100	4/3	6/4	8/6
6200	2550	700	4/3	6/4	8/6
6200	2550	900	4/3	6/4	8/6
6200	2550	1100	4/3	6/4	8/6



Hook Lift Container

Containers are made of S235 steel with a 4mm floor and a 3mm walls.

Dimensions(mm)			Volume (m3)	Weight (kg)
Length	Width	Height		
6000	2550	700	10	1510
6000	2550	1200	17	1820
6000	2550	1500	22	2150
6000	2550	2000	30	2670
6000	2550	2450	35	2850
6000	2550	2650	38	2960
6000	2550	2800	40	3040



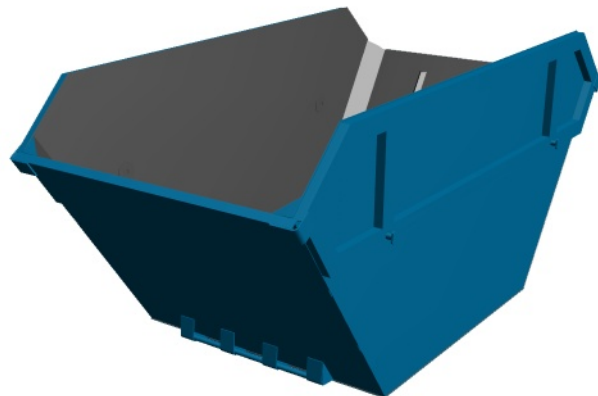
Hook Lift Container Options

- Hard cover with manual hydraulic lift
- Silent wheels
- Tarpaulin soft protective cover

Hook Lift Container

Containers are made of S235 steel with a 4mm floor and a 3mm walls.

Dimensions(mm)			Volume (m3)	Weight (kg)
Length	Width	Height		
6	3000	2000	1200	573
8	3200	2000	1500	637
10	3500	2000	1800	762
12	4000	2000	1800	1024



SHROMA

Manufacturer:

Shroma OÜ

Kiviõli , Vabaduse pst.18

42122 Estonia

Phone/Fax +372 33 95 841

GSM +372 53 402 916

www.shroma.ee

SHROMA